

Архангельск (8182)63-90-72
 Астана (7172)727-132
 Астрахань (8512)99-46-04
 Барнаул (3852)73-04-60
 Белгород (4722)40-23-64
 Брянск (4832)59-03-52
 Владивосток (423)249-28-31
 Волгоград (844)278-03-48
 Вологда (8172)26-41-59
 Воронеж (473)204-51-73
 Екатеринбург (343)384-55-89
 Иваново (4932)77-34-06

Ижевск (3412)26-03-58
 Иркутск (395)279-98-46
 Казань (843)206-01-48
 Калининград (4012)72-03-81
 Калуга (4842)92-23-67
 Кемерово (3842)65-04-62
 Киров (8332)68-02-04
 Краснодар (861)203-40-90
 Красноярск (391)204-63-61
 Курск (4712)77-13-04
 Липецк (4742)52-20-81
 Киргизия (996)312-96-26-47

Магнитогорск (3519)55-03-13
 Москва (495)268-04-70
 Мурманск (8152)59-64-93
 Набережные Челны (8552)20-53-41
 Нижний Новгород (831)429-08-12
 Новокузнецк (3843)20-46-81
 Новосибирск (383)227-86-73
 Омск (3812)21-46-40
 Орел (4862)44-53-42
 Оренбург (3532)37-68-04
 Пенза (8412)22-31-16
 Россия (495)268-04-70

Пермь (342)205-81-47
 Ростов-на-Дону (863)308-18-15
 Рязань (4912)46-61-64
 Самара (846)206-03-16
 Санкт-Петербург (812)309-46-40
 Саратов (845)249-38-78
 Севастополь (8692)22-31-93
 Симферополь (3652)67-13-56
 Смоленск (4812)29-41-54
 Сочи (862)225-72-31
 Ставрополь (8652)20-65-13
 Казахстан (772)734-952-31

Сургут (3462)77-98-35
 Тверь (4822)63-31-35
 Томск (3822)98-41-53
 Тула (4872)74-02-29
 Тюмень (3452)66-21-18
 Ульяновск (8422)24-23-59
 Уфа (347)229-48-12
 Хабаровск (4212)92-98-04
 Челябинск (351)202-03-61
 Череповец (8202)49-02-64
 Ярославль (4852)69-52-93

<https://toupstek.nt-rt.ru/> || tuo@nt-rt.ru



ATR3CCD Series M42+2" USB3.0 TE-Cooling CCD Camera

Standard 2 Inch+M42x0.75 mount camera with SONY ExView HAD CCD sensor from 1.4M ~ 6M;

Two-stage TE-cooling with controllable electric fan;

Working temperature can be regulated to specified temperature;

Smart structure to assure the heat radiation efficiency and avoid the moisture problem;

Up to 45 degrees temperature drop ensures high quality image with low noise;

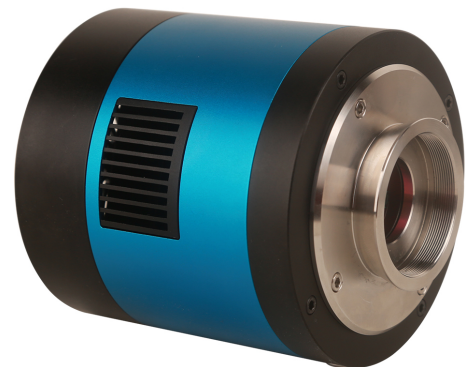
Up to 1 hour long time exposure;

USB3.0 5Gbit/second interface ensuring high speed data transmission;

Ultra-Fine color engine with perfect color reproduction capability;

With advanced video & image processing application ToupSky;

Windows/Linux/macOS/Android multiple platform SDK;



Specification

ATR3CCD Series M42+2" USB3.0 TE-Cooling CCD Camera (4)

ATR3CCD is series of Astronomy Temperature Regulated USB3.0 CCD camera, it adopts Sony EXview HAD CCD II sensor as the image-picking device with two-stage peltier cooling system. This will greatly increase the signal to noise ratio and decrease the image noise. Besides, smart internal heat transfer structure is used to transfer the heat radiation. Electric fan is used to increase the heat radiation power. USB3.0 is used as the data transfer interface.

ATR3CCD comes with advanced video & image processing application ToupSky; Providing Windows/Linux/macOS/ Android multiple platform SDK(Native C/C++, C#/VB.NET, Python, Java, DirectShow, Twain, etc);

The ATR3CCD can be widely used in low light environment capture and analysis, as well as the astronomy application.

Order Code	Sensor & Size(mm)	Pixel(μm)	G Sensitivity Dark Signal	FPS/Resolution	Binning	Exposure
ATR3CCD06000KPA AP106000A	6.0M/ICX694AQG(C) 1"(14.6x12.8)	4.54x4.54	880mv with 1/30s 8mv with 1/30s	7.5@2748x2200 14@2748x1092	1x1	0.22ms~3600s
ATR3CCD06000KMA AM106000A	6.0M/ICX694ALG(M) 1"(14.6x12.8)	4.54x4.54	1000mv with 1/30s 8mv with 1/30s	7.5@2748x2200 14@2748x1092	1x1	0.22ms~3600s

ATR3CCD02800KPA AP102800A	2.8M/ICX674AQG(C) 2/3"(10.7x9.2)	4.54x4.54	800mv with 1/30s 4mv with 1/30s	15@1940x1460 18@1932x1092	1x1	0.12ms~3600s
ATR3CCD02800KMA AM102800A	2.8M/ICX674ALG(M) 2/3"(10.7x9.2)	4.54x4.54	950mv with 1/30s 4mv with 1/30s	15@1940x1460 18@1932x1092	1x1	0.12ms~3600s
ATR3CCD01400KPA AP101400A	1.4M/ICX825AQA(C) 2/3"(10.7x8.7)	6.45x6.45	2000mv with 1/30s 4mv with 1/30s	25@1360x1024	1x1	0.12ms~3600s
ATR3CCD01400KMA AM101400A	1.4M/ICX825ALA(M) 2/3"(10.7x8.7)	6.45x6.45	2000mv with 1/30s 4mv with 1/30s	25@1360x1024	1x1	0.12ms~3600s

OTHER HARDWARE CONFIGURATION

Spectral Range	380-650nm (with IR-cut Filter) or 350-1050nm(with double side AR Coating protect window)
White Balance	ROI White Balance/ Manual Temp-Tint Adjustment
Color Rendering Technique	Ultra Fine Color Engine
Capture/Control SDK	Windows/Linux/macOS/Android Multiple Platform SDK(Native C/C++, C#/VB.NET, Python, Java, DirectShow, Twain, etc);
Recording System	Still Picture and Movie
Cooling System*	Two-stage TE-cooling System -42 °C below Camera Body Temperature

OPERATING ENVIRONMENT

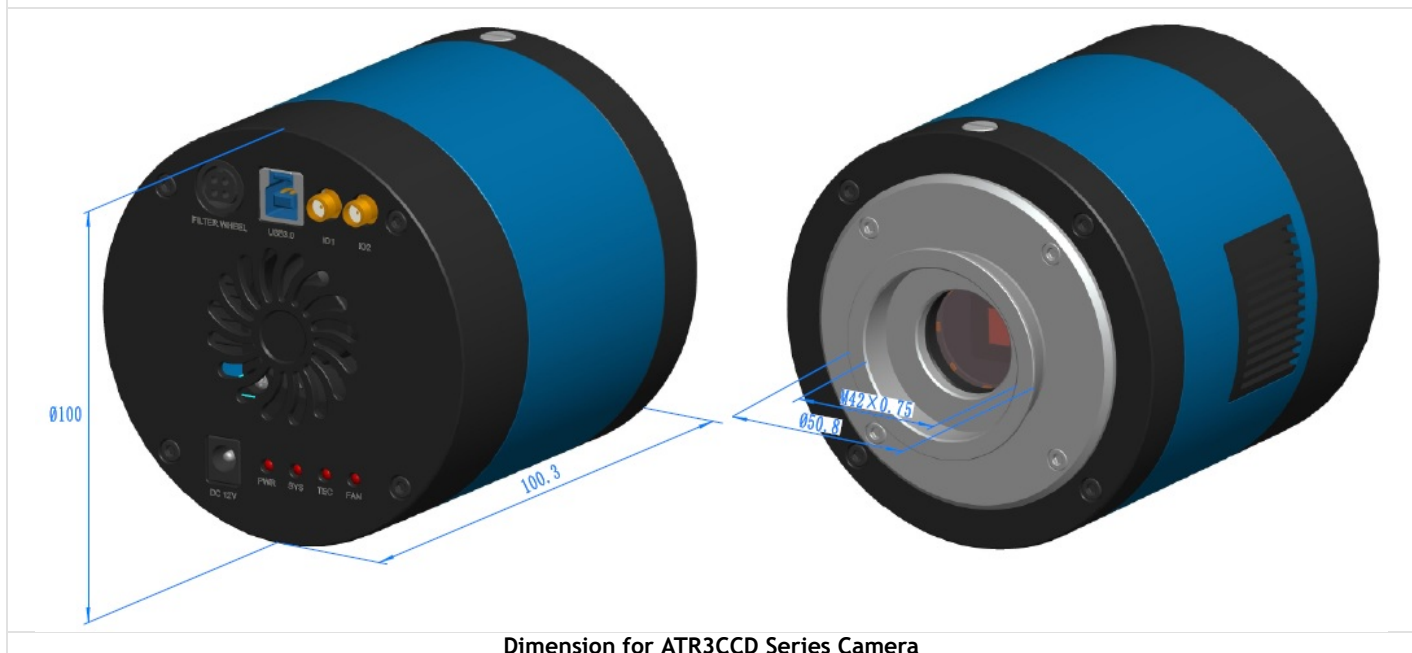
Operating Temperature	-10 °C~ 50 °C
Storage Temperature	-20 °C~ 60 °C
Operating Humidity	30~80%RH
Storage Humidity	10~60%RH
Power Supply	DC 5V over PC USB Port External Power Adapter for Cooling System, DC12V,3A

SOFTWARE ENVIRONMENT

Operating System	Support Microsoft Windows XP / Vista / 7 / 8 / 10(32 & 64 bit) OS X (Mac OS X), Linux
PC Requirements	CPU: Equal to Intel Core2 2.8GHz or Higher
	Memory: 2GB or More
	USB port: USB2.0 High-speed Port
	Display: 17" or Larger CD-ROM

Dimension of ATR3CCD Series M42+2" Temperature Regulated USB3.0 CCD Camera

Installation drawings(Click to enlarge). The ATR3CCD Series Camera body, made from tough, alloy, ensures a heavy duty, workhorse solution. The camera is designed with a high quality IR-CUT to protect the camera sensor. These measures ensure a rugged, robust solution with an increased lifespan when compared to other industrial camera solutions.



Dimension for ATR3CCD Series Camera

Архангельск (8182)63-90-72
Астана (7172)727-132
Астрахань (8512)99-46-04
Барнаул (3852)73-04-60
Белгород (4722)40-23-64
Брянск (4832)59-03-52
Владивосток (423)249-28-31
Волгоград (844)278-03-48
Вологда (8172)26-41-59
Воронеж (473)204-51-73
Екатеринбург (343)384-55-89
Иваново (4932)77-34-06

Ижевск (3412)26-03-58
Иркутск (395)279-98-46
Казань (843)206-01-48
Калининград (4012)72-03-81
Калуга (4842)92-23-67
Кемерово (3842)65-04-62
Киров (8332)68-02-04
Краснодар (861)203-40-90
Красноярск (391)204-63-61
Курск (4712)77-13-04
Липецк (4742)52-20-81
Киргизия (996)312-96-26-47

Магнитогорск (3519)55-03-13
Москва (495)268-04-70
Мурманск (8152)59-64-93
Набережные Челны (8552)20-53-41
Нижний Новгород (831)429-08-12
Новокузнецк (3843)20-46-81
Новосибирск (383)227-86-73
Омск (3812)21-46-40
Орел (4862)44-53-42
Оренбург (3532)37-68-04
Пенза (8412)22-31-16
Россия (495)268-04-70

Пермь (342)205-81-47
Ростов-на-Дону (863)308-18-15
Рязань (4912)46-61-64
Самара (846)206-03-16
Санкт-Петербург (812)309-46-40
Саратов (845)249-38-78
Севастополь (8692)22-31-93
Симферополь (3652)67-13-56
Смоленск (4812)29-41-54
Сочи (862)225-72-31
Ставрополь (8652)20-65-13
Казахстан (772)734-952-31

Сургут (3462)77-98-35
Тверь (4822)63-31-35
Томск (3822)98-41-53
Тула (4872)74-02-29
Тюмень (3452)66-21-18
Ульяновск (8422)24-23-59
Уфа (347)229-48-12
Хабаровск (4212)92-98-04
Челябинск (351)202-03-61
Череповец (8202)49-02-64
Ярославль (4852)69-52-93