

Архангельск (8182)63-90-72  
Астана (7172)727-132  
Астрахань (8512)99-46-04  
Барнаул (3852)73-04-60  
Белгород (4722)40-23-64  
Брянск (4832)59-03-52  
Владивосток (423)249-28-31  
Волгоград (844)278-03-48  
Вологда (8172)26-41-59  
Воронеж (473)204-51-73  
Екатеринбург (343)384-55-89  
Иваново (4932)77-34-06

Ижевск (3412)26-03-58  
Иркутск (395)279-98-46  
Казань (843)206-01-48  
Калининград (4012)72-03-81  
Калуга (4842)92-23-67  
Кемерово (3842)65-04-62  
Киров (8332)68-02-04  
Краснодар (861)203-40-90  
Красноярск (391)204-63-61  
Курск (4712)77-13-04  
Липецк (4742)52-20-81

Магнитогорск (3519)55-03-13  
Москва (495)268-04-70  
Мурманск (8152)59-64-93  
Набережные Челны (8552)20-53-41  
Нижний Новгород (831)429-08-12  
Новокузнецк (3843)20-46-81  
Новосибирск (383)227-86-73  
Омск (3812)21-46-40  
Орел (4862)44-53-42  
Оренбург (3532)37-68-04  
Пенза (8412)22-31-16

Пермь (342)205-81-47  
Ростов-на-Дону (863)308-18-15  
Рязань (4912)46-61-64  
Самара (846)206-03-16  
Санкт-Петербург (812)309-46-40  
Саратов (845)249-38-78  
Севастополь (8692)22-31-93  
Симферополь (3652)67-13-56  
Смоленск (4812)29-41-54  
Сочи (862)225-72-31  
Ставрополь (8652)20-65-13

Сургут (3462)77-98-35  
Тверь (4822)63-31-35  
Томск (3822)98-41-53  
Тула (4872)74-02-29  
Тюмень (3452)66-21-18  
Ульяновск (8422)24-23-59  
Уфа (347)229-48-12  
Хабаровск (4212)92-98-04  
Челябинск (351)202-03-61  
Череповец (8202)49-02-64  
Ярославль (4852)69-52-93

Киргизия (996)312-96-26-47

Россия (495)268-04-70

Казахстан (772)734-952-31

<https://toupstek.nt-rt.ru/> || [tuo@nt-rt.ru](mailto:tuo@nt-rt.ru)

## XCAM720PHA HDMI Output C-mount CMOS Camera

Through the standard HDMI interface to stream the video to display or HDTV.  
Easy connecting to other equipment on the production line with the C-mount optical interface.

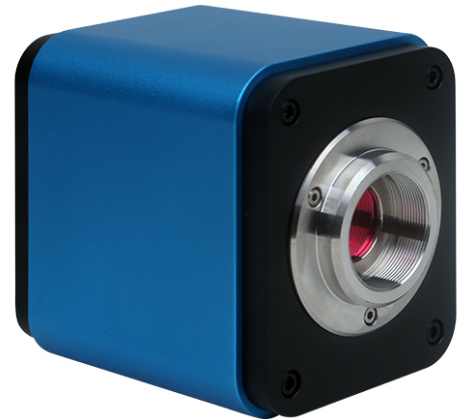
High-resolution and high frame rate, perfect color reproduction, highly integrated and compact, low failure rate and stable performance.

1280 × 720 (720P) resolution to match the current high-definition display on the market.

Supporting various OSD cursors which can be toggled On/Off (functions shift as users press the button). The OSDs including: scale, double horizontal line, double vertical line, double cross line, Tri-cross line.

The other function buttons including automatic white balance and exposure on/off (AEWB), saving images to SD card (SAVE), video stream and freeze on/off (FREEZE), remote image snapshot controller to reduce the vibration blur (REMOTE).

For the above characteristic and technical features, which utmost meet various applications and widely apply to industrial inspection, education and research, materials analysis, precision measurement, medical analyses etc.



## Specification

### XCAM0720PHA C-mount HDMI CMOS Camera(1, Discontinued )

Order Code	Sensor & Size(mm)	Pixel(μm)	G Sensitivity Dark Signal	FPS/Resolution	Binning	Exposure
XCAM0720PHA XP00720A(Suspended)	720P/MT9P031(C) 1/2.5" (5.70x4.28)	2.2x2.2	1.4 V/lux-sec 70.1dB 38.1dB	30@1280x720	1x1	0.21ms~33ms

#### HARDWARE CONFIGURATION

Spectral Range	380-650nm (with IR-filter)
White balance	Auto / Manual
Color Rendering Technique	Ultra Fine Color Engine
Cooling System*	Natural

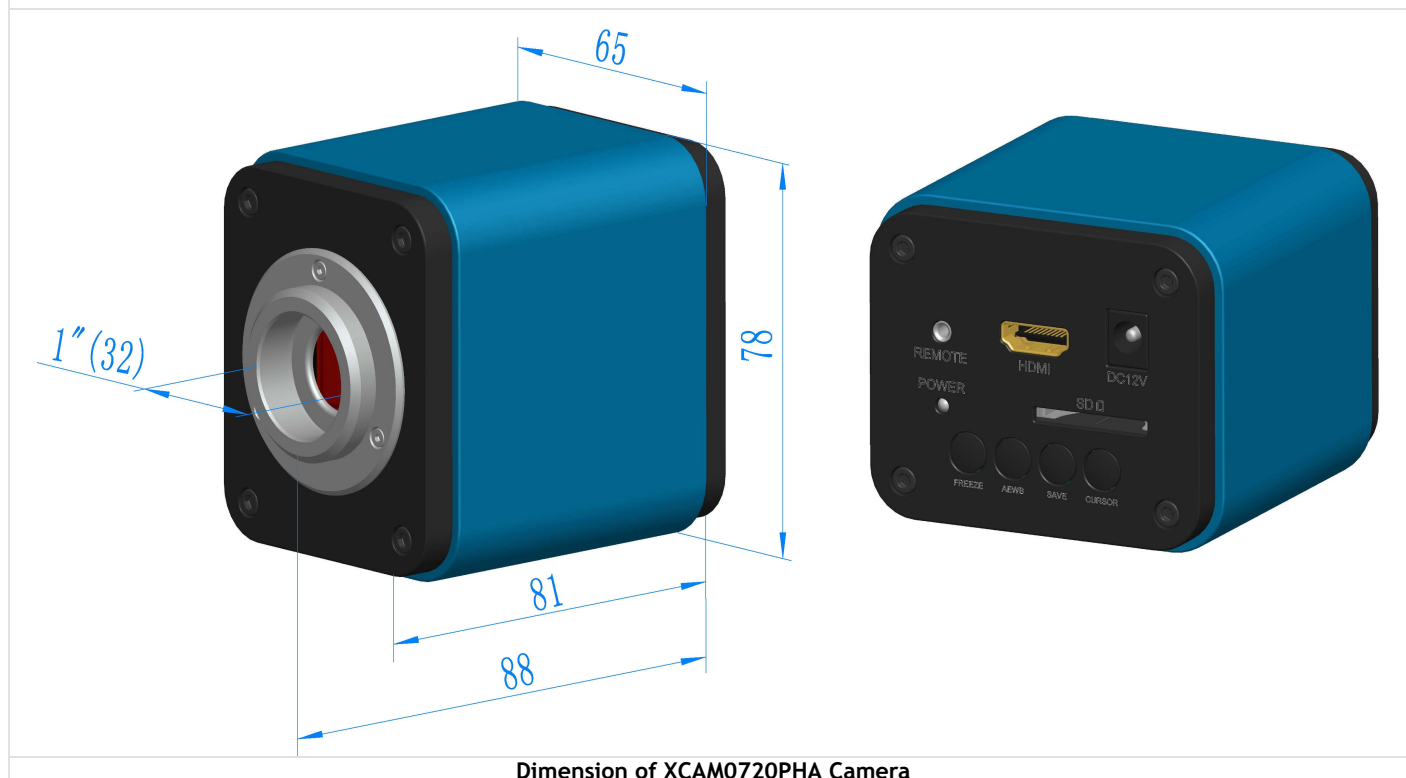
#### INTERFACE & BUTTON FUNCTION

RED Button	Cursor ON/OFF
BLUE Button	Save Image to SD Card
YELLOW Button	AEWB ON/OFF
WHITE Button	VIDEO Stream/Freeze
INTERFACE	1X VGA Output Port
	1X SD Card Slot
	1X Power Input Slot
	1X Remote Switch Slot
OVERALL DIMENSIONS	

Width X Depth X Height	68mm (2.67") X 68mm (2.67") X 92mm (3.62")
Shipping Weight	0.25 kg (0.55lbs)
<b>OPERATING ENVIRONMENT</b>	
Operating Temperature	-10°C~ 50°C
Storage Temperature	-20°C~ 60°C
Operating Humidity	30~80%RH
Storage Humidity	10~60%RH
Power Supply	DC 5V over PC USB Port
<b>OPTIONAL ACCESSORIES</b>	
Lens	C-mount Lens
Cable	VGA Cable
Memory Card	SD Card
Remote Image Save Switch	2.5mm Headphone Jack Remote Image Save Switch

## Dimension XCAM0720PHA

Installation drawings(Click to enlarge). The XCAM0720PHA HDMI CMOS camera body, made from tough, aluminium alloy, ensures a heavy duty, workhorse solution. The camera is designed with a high quality IR-CUT to protect the camera sensor. No moving parts included. These measures ensure a rugged, robust solution with an increased lifespan when compared to other industrial camera solutions.



Архангельск (8182)63-90-72  
Астана (7172)727-132  
Астрахань (8512)99-46-04  
Барнаул (3852)73-04-60  
Белгород (4722)40-23-64  
Брянск (4832)59-03-52  
Владивосток (423)249-28-31  
Волгоград (844)278-03-48  
Вологда (8172)26-41-59  
Воронеж (473)204-51-73  
Екатеринбург (343)384-55-89  
Иваново (4932)77-34-06

Ижевск (3412)26-03-58  
Иркутск (395)279-98-46  
Казань (843)206-01-48  
Калининград (4012)72-03-81  
Калуга (4842)92-23-67  
Кемерово (3842)65-04-62  
Киров (8332)68-02-04  
Краснодар (861)203-40-90  
Красноярск (391)204-63-61  
Курск (4712)77-13-04  
Липецк (4742)52-20-81

Магнитогорск (3519)55-03-13  
Москва (495)268-04-70  
Мурманск (8152)59-64-93  
Набережные Челны (8552)20-53-41  
Нижний Новгород (831)429-08-12  
Новокузнецк (3843)20-46-81  
Новосибирск (383)227-86-73  
Омск (3812)21-46-40  
Орел (4862)44-53-42  
Оренбург (3532)37-68-04  
Пенза (8412)22-31-16

Пермь (342)205-81-47  
Ростов-на-Дону (863)308-18-15  
Рязань (4912)46-61-64  
Самара (846)206-03-16  
Санкт-Петербург (812)309-46-40  
Саратов (845)249-38-78  
Севастополь (8692)22-31-93  
Симферополь (3652)67-13-56  
Смоленск (4812)29-41-54  
Сочи (862)225-72-31  
Ставрополь (8652)20-65-13

Сургут (3462)77-98-35  
Тверь (4822)63-31-35  
Томск (3822)98-41-53  
Тула (4872)74-02-29  
Тюмень (3452)66-21-18  
Ульяновск (8422)24-23-59  
Уфа (347)229-48-12  
Хабаровск (4212)92-98-04  
Челябинск (351)202-03-61  
Череповец (8202)49-02-64  
Ярославль (4852)69-52-93

Киргизия (996)312-96-26-47

Россия (495)268-04-70

Казахстан (772)734-952-31

<https://toupstek.nt-rt.ru/> || [tuo@nt-rt.ru](mailto:tuo@nt-rt.ru)