

Архангельск (8182)63-90-72
Астана (7172)727-132
Астрахань (8512)99-46-04
Барнаул (3852)73-04-60
Белгород (4722)40-23-64
Брянск (4832)59-03-52
Владивосток (423)249-28-31
Волгоград (844)278-03-48
Вологда (8172)26-41-59
Воронеж (473)204-51-73
Екатеринбург (343)384-55-89
Иваново (4932)77-34-06

Ижевск (3412)26-03-58
Иркутск (395)279-98-46
Казань (843)206-01-48
Калининград (4012)72-03-81
Калуга (4842)92-23-67
Кемерово (3842)65-04-62
Киров (8332)68-02-04
Краснодар (861)203-40-90
Красноярск (391)204-63-61
Курск (4712)77-13-04
Липецк (4742)52-20-81

Магнитогорск (3519)55-03-13
Москва (495)268-04-70
Мурманск (8152)59-64-93
Набережные Челны (8552)20-53-41
Нижний Новгород (831)429-08-12
Новокузнецк (3843)20-46-81
Новосибирск (383)227-86-73
Омск (3812)21-46-40
Орел (4862)44-53-42
Оренбург (3532)37-68-04
Пенза (8412)22-31-16

Пермь (342)205-81-47
Ростов-на-Дону (863)308-18-15
Рязань (4912)46-61-64
Самара (846)206-03-16
Санкт-Петербург (812)309-46-40
Саратов (845)249-38-78
Севастополь (8692)22-31-93
Симферополь (3652)67-13-56
Смоленск (4812)29-41-54
Сочи (862)225-72-31
Ставрополь (8652)20-65-13

Сургут (3462)77-98-35
Тверь (4822)63-31-35
Томск (3822)98-41-53
Тула (4872)74-02-29
Тюмень (3452)66-21-18
Ульяновск (8422)24-23-59
Уфа (347)229-48-12
Хабаровск (4212)92-98-04
Челябинск (351)202-03-61
Череповец (8202)49-02-64
Ярославль (4852)69-52-93

Киргизия (996)312-96-26-47

Россия (495)268-04-70

Казахстан (772)734-952-31

<https://toup tek.nt-rt.ru/> || tuo@nt-rt.ru



XCAM1080P Series HDMI/USB Multi-outputs C-mount CMOS Camera

Sony Starvis back illuminated CMOS sensor

FHD HDMI video outputs

SD card for the captured image and video storage

Embedded XCamView for the control of the camera

With strong ISP and other related processing functions

Specification

XCAM1080P Series HDMI/USB Multi-outputs C-mount CMOS Camera(2)

The XCAM1080P series camera is the next-generation live-view imaging-system with 1080P resolution(Video) at 60/30 FPS. It comes with Sony Exmor CMOS sensor with high sensitivity, low dark current and no smear achieved through the adoption of R, G and B primary color mosaic filters.

The camera uses a standard C-mount interface for maximum compatibility with various microscopy-systems. It can be used as a stand-alone recorder when used with an HDMI monitor or television, or live-streamed to a PC via USB for image-capture and video-recording.

Hardware 3D denoising, sharpness and tone mapping control functions greatly improve the image and video quality.

The included Windows software offers image-development and measurement tools, as well as advanced compositing features such as image-stitching and extended-depth-of-focus. With the ability to calibrate scales at multiple magnifications, the software can be used for multi-level inspection. For Mac and Linux, there is a lite version of the software which can capture video and still images, and includes limited processing features.

The XCAM1080P series camera is intended to be used for the acquisition of digital images from the stereo microscope, biological microscope or online interactive teaching.

Order Code	Sensor & Size(mm)	Pixel(μm)	G Sensitivity Dark Signal	FPS/Resolution	Binning	Exposure
XCAM1080P2MPA	Sony IMX385(C) 1/2"(7.2x4.05)	3.75x3.75	1175mv with 1/30s 0.15mv with 1/30s	60@1920*1080(HDMI) 50@1920*1080(USB)	1x1	0.04ms~1000ms
XCAM1080P8MPB	Sony IMX415(C) 1/2.8"(5.57x3.13)	1.45x1.45	300mv with 1/30s 0.13mv with 1/30s	30@1920*1080(HDMI) 30@3840*2160(USB)	1x1	0.04ms~1000ms



Interface or Button	Function Description
USB Mouse	Connect USB mouse for easy operation with embedded XCAMView software

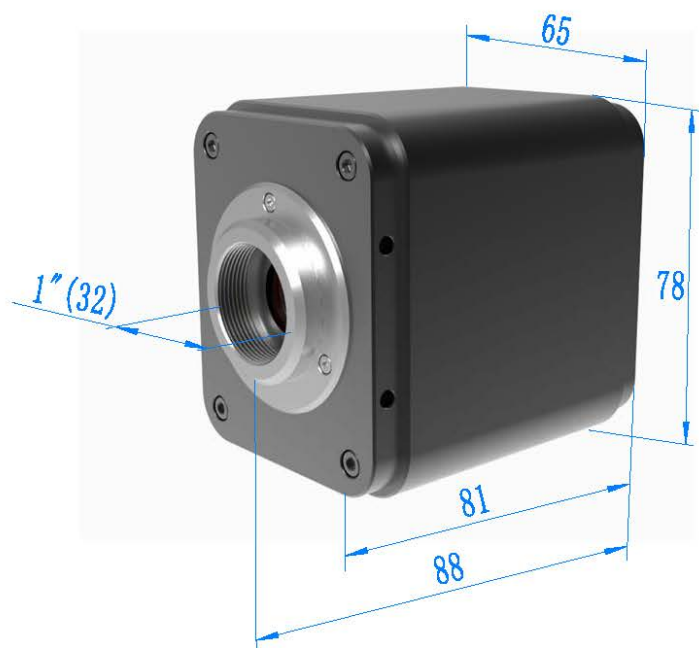
USB Video	Connect PC or other host device to realize video image transmission
HDMI	Comply with HDMI1.4 standard. 1080P format video output for standard monitor;
DC12V	Power adapter connection (12V/1A)
SD	Comply with SDIO3.0 standard and SD card could be inserted for video and images saving
LED	LED status indicator
ON/OFF	Power switch
Video Output Interface Function Description	
HDMI Interface	Comply with HDMI1.4 standard; 60fps@1080P;
USB Video Interface	Connecting USB Video port of PC for video transfer MJPEG format video
Other Function Function Description	
Video Saving	Video format: 1920*1080 H264/H265 encoded MP4 file; Video saving frame rate: 60fps(XCAM1080P2MPA);30fps(XCAM1080P8MPB)
Image Capture	2M (1920*2160, XCAM1080P2MPA) JPEG/TIFF image in SD card; 8M (3840*2160, XCAM1080P8MPB) JPEG/TIFF image in SD card;
Measurement Saving	Measurement information saved in different layer with image content Measurement information is saved together with image content in burn in mode
ISP	Exposure(Automatic / Manual Exposure) / Gain, White Balance(Manual / Automatic / ROI Mode), Sharpening, 3D Denoise, Saturation Adjustment, Contrast Adjustment, Brightness Adjustment, Gamma Adjustment, Color to Gray, 50HZ/60HZ Anti-flicker Function
Image Operation	Zoom In/Zoom Out, Mirror/Flip, Freeze, Cross Line, Overlay, Embedded Files Browser, Video Playback, Measurement Function
Embedded RTC(Optional)	To support accurate time on board
Restore Factory Settings	Restore camera parameters to its factory status
Multiple Language Support	English / Simplified Chinese / Traditional Chinese / Korean / Thailand / French / German / Japanese / Italian / Russian
Software Environment under LAN/WLAN/USB Video Output	
White Balance	Auto White Balance
Color Technique	Ultra-Fine Color Engine
Capture/Control SDK	Windows/Linux/macOS/Android Multiple Platform SDK(Native C/C++, C#/VB.NET, Python, Java, DirectShow, Twain, etc)
Recording System	Still Picture or Movie
Operating System	Microsoft® Windows® XP / Vista / 7 / 8 / 8.1 /10 /11(32 & 64 bit)
	OSx(Mac OS X)
	Linux
PC Requirements	CPU: Equal to Intel Core2 2.8GHz or Higher Memory: 4GB or More Display:19" or Larger CD-ROM
Operating Environment	
Operating Temperature (in Centidegree)	-10° ~ 50°
Storage Temperature (in Centidegree)	-20° ~ 60°
Operating Humidity	30~80%RH
Storage Humidity	10~60%RH

Potential Application

- Scientific research, education (teaching, demonstration and academic exchanges);
- Digital laboratory, medical research;
- Industrial visual (PCB examination, IC quality control);
- Medical treatment (pathological observation);
- Food (microbial colony observation and counting);
- Aerospace, military (high sophisticated weapons);

Dimension of XCAM1080P Series

Installation drawings(Click to enlarge). The XCAM1080P series camera body, made from tough, CNC aluminium alloy, ensures a heavy duty, workhorse solution. The camera is designed with a high quality IR-CUT to protect the camera sensor. No moving parts included. This design ensures a rugged, robust solution with an increased lifespan when compared to other industrial camera solutions.



Dimension for XCAM1080P Series

Архангельск (8182)63-90-72
Астана (7172)727-132
Астрахань (8512)99-46-04
Барнаул (3852)73-04-60
Белгород (4722)40-23-64
Брянск (4832)59-03-52
Владивосток (423)249-28-31
Волгоград (844)278-03-48
Вологда (8172)26-41-59
Воронеж (473)204-51-73
Екатеринбург (343)384-55-89
Иваново (4932)77-34-06

Ижевск (3412)26-03-58
Иркутск (395)279-98-46
Казань (843)206-01-48
Калининград (4012)72-03-81
Калуга (4842)92-23-67
Кемерово (3842)65-04-62
Киров (8332)68-02-04
Краснодар (861)203-40-90
Красноярск (391)204-63-61
Курск (4712)77-13-04
Липецк (4742)52-20-81

Магнитогорск (3519)55-03-13
Москва (495)268-04-70
Мурманск (8152)59-64-93
Набережные Челны (8552)20-53-41
Нижний Новгород (831)429-08-12
Новокузнецк (3843)20-46-81
Новосибирск (383)227-86-73
Омск (3812)21-46-40
Орел (4862)44-53-42
Оренбург (3532)37-68-04
Пенза (8412)22-31-16

Пермь (342)205-81-47
Ростов-на-Дону (863)308-18-15
Рязань (4912)46-61-64
Самара (846)206-03-16
Санкт-Петербург (812)309-46-40
Саратов (845)249-38-78
Севастополь (8692)22-31-93
Симферополь (3652)67-13-56
Смоленск (4812)29-41-54
Сочи (862)225-72-31
Ставрополь (8652)20-65-13

Сургут (3462)77-98-35
Тверь (4822)63-31-35
Томск (3822)98-41-53
Тула (4872)74-02-29
Тюмень (3452)66-21-18
Ульяновск (8422)24-23-59
Уфа (347)229-48-12
Хабаровск (4212)92-98-04
Челябинск (351)202-03-61
Череповец (8202)49-02-64
Ярославль (4852)69-52-93

Киргизия (996)312-96-26-47

Россия (495)268-04-70

Казахстан (772)734-952-31

<https://toupstek.nt-rt.ru/> || tuo@nt-rt.ru