

Архангельск (8182)63-90-72  
Астана (7172)727-132  
Астрахань (8512)99-46-04  
Барнаул (3852)73-04-60  
Белгород (4722)40-23-64  
Брянск (4832)59-03-52  
Владивосток (423)249-28-31  
Волгоград (844)278-03-48  
Вологда (8172)26-41-59  
Воронеж (473)204-51-73  
Екатеринбург (343)384-55-89  
Иваново (4932)77-34-06

Ижевск (3412)26-03-58  
Иркутск (395)279-98-46  
Казань (843)206-01-48  
Калининград (4012)72-03-81  
Калуга (4842)92-23-67  
Кемерово (3842)65-04-62  
Киров (8332)68-02-04  
Краснодар (861)203-40-90  
Красноярск (391)204-63-61  
Курск (4712)77-13-04  
Липецк (4742)52-20-81

Магнитогорск (3519)55-03-13  
Москва (495)268-04-70  
Мурманск (8152)59-64-93  
Набережные Челны (8552)20-53-41  
Нижний Новгород (831)429-08-12  
Новокузнецк (3843)20-46-81  
Новосибирск (383)227-86-73  
Омск (3812)21-46-40  
Орел (4862)44-53-42  
Оренбург (3532)37-68-04  
Пенза (8412)22-31-16

Пермь (342)205-81-47  
Ростов-на-Дону (863)308-18-15  
Рязань (4912)46-61-64  
Самара (846)206-03-16  
Санкт-Петербург (812)309-46-40  
Саратов (845)249-38-78  
Севастополь (8692)22-31-93  
Симферополь (3652)67-13-56  
Смоленск (4812)29-41-54  
Сочи (862)225-72-31  
Ставрополь (8652)20-65-13

Сургут (3462)77-98-35  
Тверь (4822)63-31-35  
Томск (3822)98-41-53  
Тула (4872)74-02-29  
Тюмень (3452)66-21-18  
Ульяновск (8422)24-23-59  
Уфа (347)229-48-12  
Хабаровск (4212)92-98-04  
Челябинск (351)202-03-61  
Череповец (8202)49-02-64  
Ярославль (4852)69-52-93

Киргизия (996)312-96-26-47

Россия (495)268-04-70

Казахстан (772)734-952-31

<https://toupstek.nt-rt.ru/> || [tuo@nt-rt.ru](mailto:tuo@nt-rt.ru)

## XFCAM1080PHB/PHD Auto-focus C-mount HDMI+WIFI CMOS Camera

All in 1( HDMI+WiFi) C-mount camera with Sony high sensitivity CMOS sensor;

1920 × 1080 (1080P) video resolution;

Record 1080P video(ASF format) into SD card;v

5~2M resolution captured image(XFCAM1080PHB/PHD);

HDMI/WiFi output simultaneously;

Auto/Manual focus with the movement of the sensor;

For HDMI output, XCamView is used to control the camera;

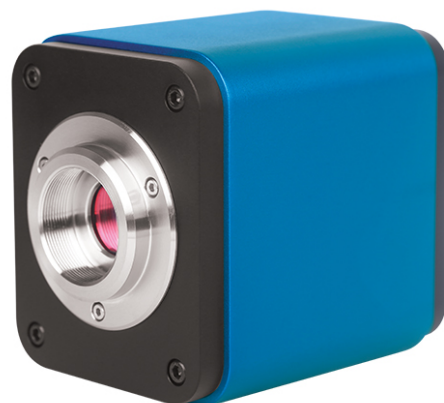
For WiFi output, ToupView/ToupLite is used to control the camera;

Ultra-Fine Color Engine with perfect color reproduction capability(WiFi);

With advanced video & image processing application ToupView/ToupLite;

Windows/Linux/OSX/Android multi-platform SDK;

CNC Camera housing;



### Specification

## XFCAM1080PHB/PHD Auto-focus HDMI+WIFI+SD Card All in 1 CMOS Camera(2)

XFCAM1080PHB/PHD is a multiple interfaces (HDMI+WiFi+SD card, so X here means multiple interfaces) CMOS camera with autofocus function (F means autofocus) and it adopts ultra-high performance Sony CMOS sensor as the image-picking device. HDMI+WiFi are used as the data transfer interface to HDMI display or computer.

For HDMI output, The XCamView will be loaded and a camera control panel and toolbar are overlaid on the HDMI screen, in this case, the USB mouse can be used to set the camera, browse and compare the captured image, play the video ital.

In HDMI output, the camera embedded Auto/Manual focus function can obtain the clear image at ease. No hand rotation of the microscope Coarse/Fine knob is needed.

For WiFi output, unplug the mouse and plug in the USB WiFi adapter, connect the computer WiFi to the camera, then the video stream can be transfer to computer with the advanced software ToupView. With ToupView, you can control the camera, process the image as ToupTek's other USB series camera.

Order Code	Sensor & Size(mm)	Pixel(μm)	G Sensitivity Dark Signal	FPS/Resolution	Binning	Exposure
XFCAM1080PHB XF1080B	1080P/5M/ Sony IMX178(C) 1/1.8"(6.22x4.67)	2.4x2.4	425 mv with 1/30s 0.15 mv with 1/30s	30@1920x1080 (HDMI) 25@1920x1080 (WiFi)	1x1	0.03ms-918ms
XFCAM1080PHD XF1080D	1080P/2M/ Sony IMX185(C) 1/1.9"(7.20x4.05)	3.75x3.75	1120 mv with 1/30s 0.15 mv with 1/30s	60@1920x1080 (HDMI) 25@1920x1080 (WiFi)	1x1	0.06ms-918ms

Interface & Button Functions		
	USB	USB Camera or USB Mouse
	HDMI	HDMI Output
	DC12V	12V Power in
	SD	SD Card Slot
	LED	Power On Indicaator
	ON/OFF	Power On/Off Switch
Other Specification for HDMI Output		
UI Operation	With USB Mouse	
Image Capture	JPEG Format with 5M Resolution in SD Card(XFCAM1080PHB) JPEG Format with 2M Resolution in SD Card(XFCAM1080PHD)	
Video Record	ASF Format 1080P 30fps in SD Card	
Camera Control Panel	Including Exposure, Gain, White Balance, Color Adjustment, Sharpness and Denoising Control	
Auto-focus Control Panel	Including Auto-focus, Manual Focus, One Push AF and Conjugate Correction Functions	
Toolbar	Including Zoom, Mirror, Comparison, Freeze, Cross, WDR, Auto-focus, Browser Function, Setting, Muti-language and XCamView Version Information	
Other Specification for WIFI Output		
UI Operation	With USB Mouse to Operate on the embedded XCamView	
WIFI Performance	802.11n 150Mbps; RF Power 20dBm(Maximum)	
Maximum Connected Devices	3~6(According to the Environment and Connection Distance)	
White Balance	Auto White Balance	
Color Technique	Ultra-Fine Color Engine (WiFi)	
Capture/Control SDK	Windows/Linux/macOS/Android Multiple Platform SDK(Native C/C++, C#/VB.NET, Python, Java, DirectShow, Twain, etc)(WiFi)(WiFi)	
Recording System	Still Picture or Movie (WIFI)	
Software Environment (for USB2.0 Connection)		
Operating System	Microsoft® Windows® XP /Vista /7/8/8.1/10(32 & 64 bit) OSx(Mac OS X) Linux	
PC Requirements	CPU: Equal to Intel Core2 2.8GHz or Higher	
	Memory: 4GB or More	
	USB Port: USB2.0 High-speed Port	
	Display: 19” or Larger CD-ROM	
Operating Environment		
Operating Temperature(in Centidegree)	-10~ 50	
Storage Temperature(in Centidegree)	-20~ 60	
Operating Humidity	30~80%RH	
Storage Humidity	10~60%RH	
Power Supply	DC 12V/2A Adaptor	
Overall Dimensions		
Width x Depth x Height	78 mm (3.07”) x 70 mm (2.76”) x 92mm (3.62”)	
Shipping Weight	0.47 kg (1.0lbs)	

## Auto-Focus HDMI Camera and Microscope




Front View of the XFCAM1080PHB/PHD Camera



Back View of the XFCAM1080PHB/PHD Camera

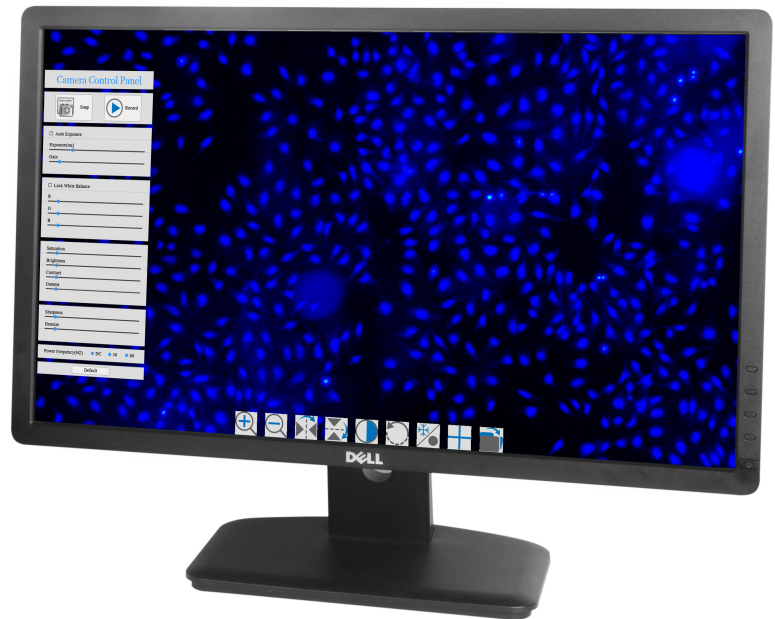


Normal View



Side View





The XFCAM1080PHB/PHD and Microscope



UI of the XFCAM1080PHB/PHD Camera

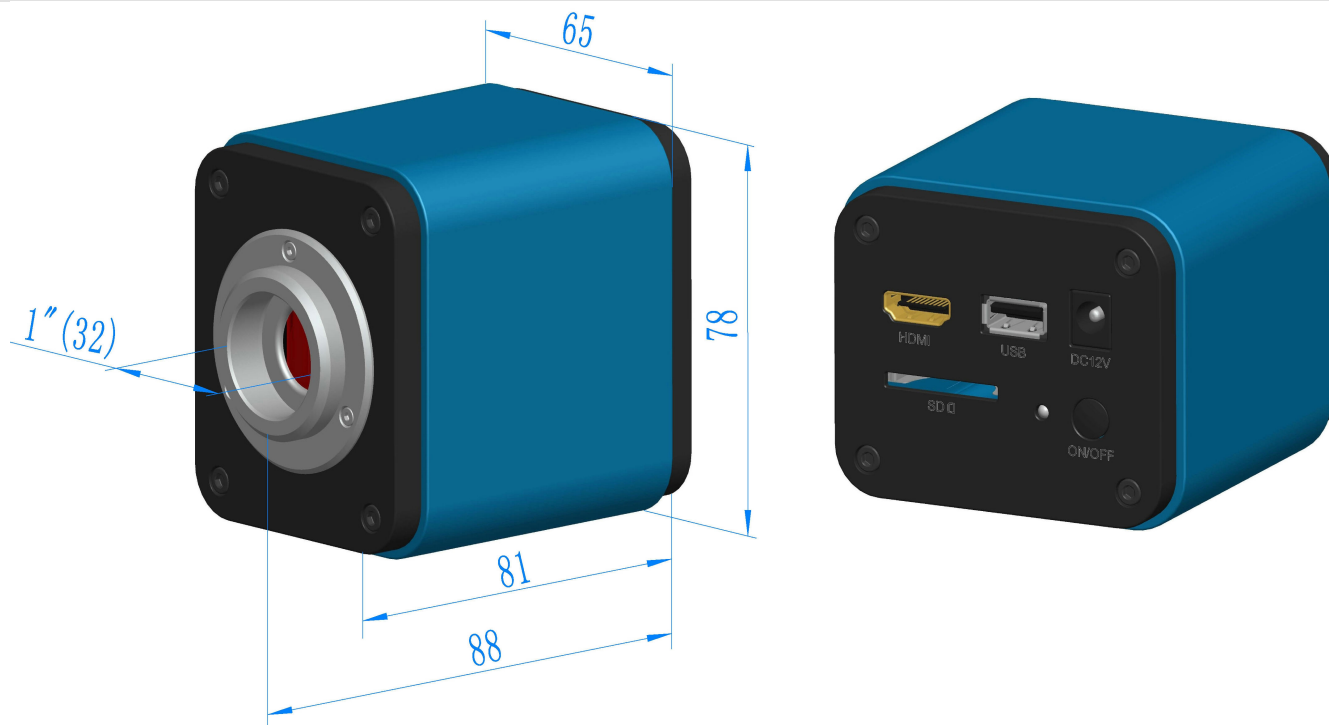
## Potential Application

Scientific research, education (teaching, demonstration and academic exchanges);  
 Digital laboratory, medical research;  
 Industrial visual (PCB examination, IC quality control);  
 Medical treatment (pathological observation);  
 Food (microbial colony observation and counting);  
 Aerospace, military (high sophisticated weapons);

## XFCAM1080PHB/PHD Auto-focus C-mount HDMI+WIFI CMOS Camera Dimension

<

Installation drawings(Click to enlarge). The XFCAM1080PHB/PHD Auto-focus HDMI WiFi CMOS camera body, made from tough, aluminium alloy, ensures a heavy duty, workhorse solution. The camera is designed with a high quality IR-CUT to protect the camera sensor. No moving parts included. These measures ensure a rugged, robust solution with an increased lifespan when compared to other industrial camera solutions.



Dimension for XFCAM1080PHB/PHD Auto-focus C-mount HDMI WiFi CMOS Camera

Архангельск (8182)63-90-72  
Астана (7172)727-132  
Астрахань (8512)99-46-04  
Барнаул (3852)73-04-60  
Белгород (4722)40-23-64  
Брянск (4832)59-03-52  
Владивосток (423)249-28-31  
Волгоград (844)278-03-48  
Вологда (8172)26-41-59  
Воронеж (473)204-51-73  
Екатеринбург (343)384-55-89  
Иваново (4932)77-34-06

Ижевск (3412)26-03-58  
Иркутск (395)279-98-46  
Казань (843)206-01-48  
Калининград (4012)72-03-81  
Калуга (4842)92-23-67  
Кемерово (3842)65-04-62  
Киров (8332)68-02-04  
Краснодар (861)203-40-90  
Красноярск (391)204-63-61  
Курск (4712)77-13-04  
Липецк (4742)52-20-81

Киргизия (996)312-96-26-47

Магнитогорск (3519)55-03-13  
Москва (495)268-04-70  
Мурманск (8152)59-64-93  
Набережные Челны (8552)20-53-41  
Нижний Новгород (831)429-08-12  
Новокузнецк (3843)20-46-81  
Новосибирск (383)227-86-73  
Омск (3812)21-46-40  
Орел (4862)44-53-42  
Оренбург (3532)37-68-04  
Пенза (8412)22-31-16

Россия (495)268-04-70

Пермь (342)205-81-47  
Ростов-на-Дону (863)308-18-15  
Рязань (4912)46-61-64  
Самара (846)206-03-16  
Санкт-Петербург (812)309-46-40  
Саратов (845)249-38-78  
Севастополь (8692)22-31-93  
Симферополь (3652)67-13-56  
Смоленск (4812)29-41-54  
Сочи (862)225-72-31  
Ставрополь (8652)20-65-13

Казахстан (772)734-952-31

Сургут (3462)77-98-35  
Тверь (4822)63-31-35  
Томск (3822)98-41-53  
Тула (4872)74-02-29  
Тюмень (3452)66-21-18  
Ульяновск (8422)24-23-59  
Уфа (347)229-48-12  
Хабаровск (4212)92-98-04  
Челябинск (351)202-03-61  
Череповец (8202)49-02-64  
Ярославль (4852)69-52-93

<https://touppek.nt-rt.ru/> || [tuo@nt-rt.ru](mailto:tuo@nt-rt.ru)